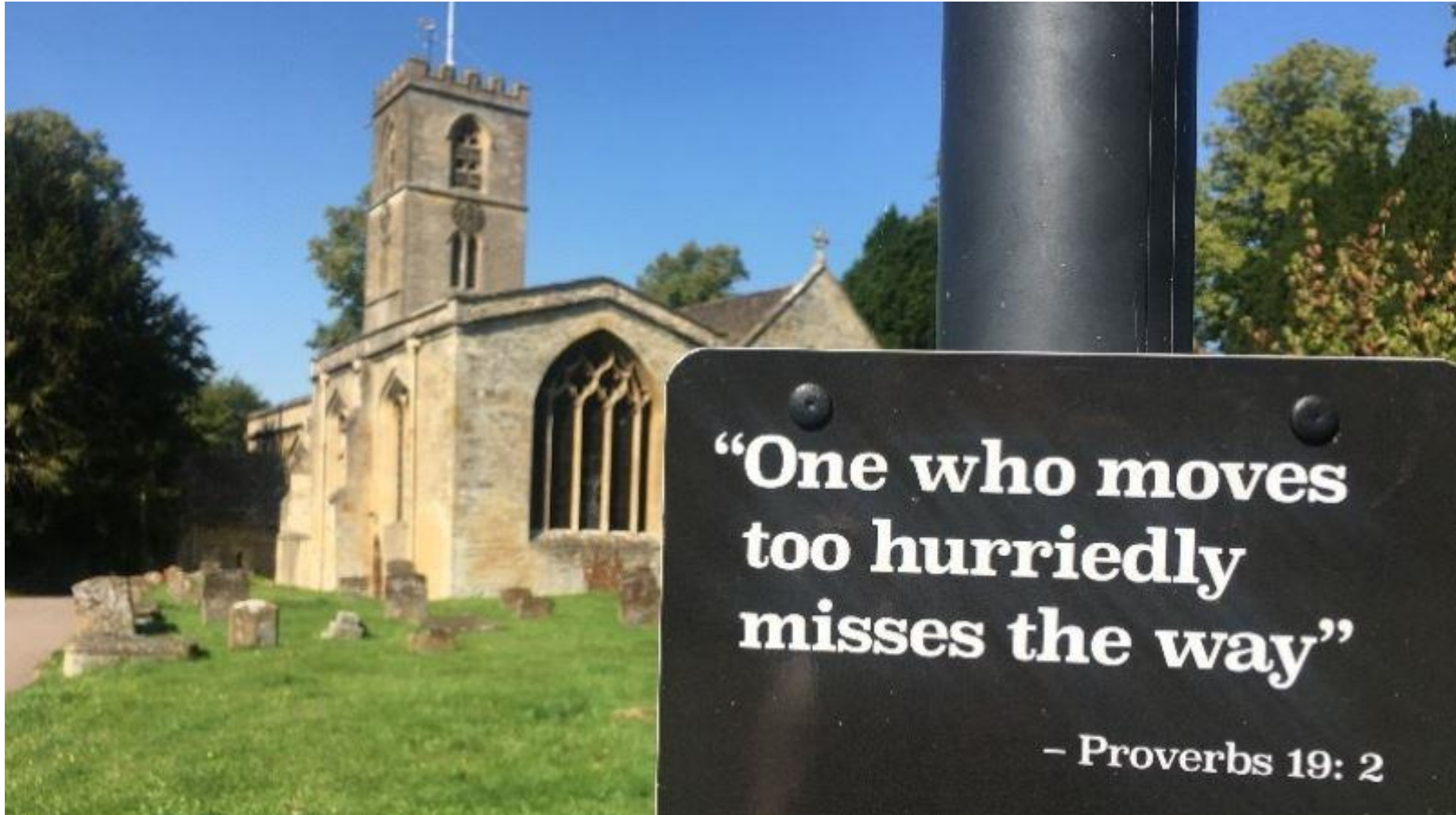


Using Churches Creatively

Tips and Case studies

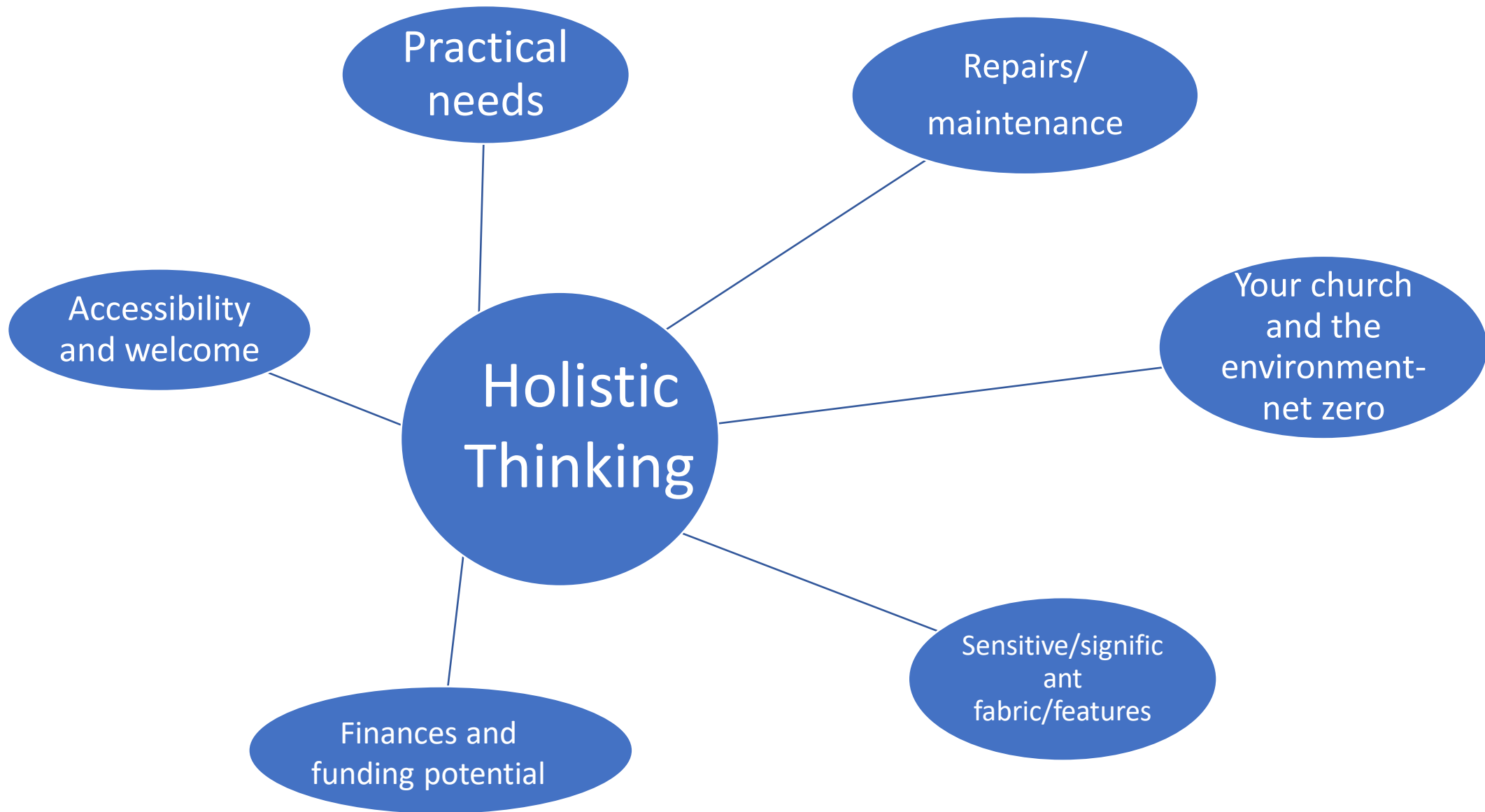


- Consider what makes your church special/unique
- Consult your local community to ask
 - Unmet needs- worship and outreach?
 - What does the building do well? What needs improvement?
 - Which user groups would use the church?
 - Added value: Can people offer time/skills?
- How to consult? Paper surveys, online, or in person
- Engage folk wearing several hats



- People first, then facilities: not “build it and they will come”
- Focus on what’s possible now- experiment with TROs, signage, access ramps, makeshift tea points and portaloos
- Future-proof, not fantasy
- Consider phasing into manageable projects





Aston Clinton- St Michael & All Angels- Buckingham



Aston Clinton- St Michael & All Angels- Buckingham

Existing facilities: small kitchen in tower, external non disabled-friendly



Above: The base of the tower with kitchen cupboards to the left and storage for the vestry and choir vestry to the



Repair Café: Aston Clinton- St Michael & All Angels



Repair Café: Aston Clinton- St Michael & All Angels

Repair Café frequently asked questions:

what's a repair cafe?

We are a group of volunteers of many differing skills who want to fix your stuff.

what repairs can you do?

We have needleworkers, carpenters, electronic & mechanical engineers & handy folk.
We can sew, solder, glue, sharpen, patch, weld, disassemble, diagnose, rebuild & more.

Do I have to book?

No! Just turn up. Items are repaired in order of arrival and it's always best to come early!

Can I bring more than one item?

Yes! But if we're busy, subsequent items have to queue again.

Do I have to pay for a repair?

There is no charge for our services, but any parts have to be provided or paid for.
Voluntary donations are invited to cover running costs of the café and church.

When and where is the café?

The second Saturday of the month at St Michael's church, Aston Clinton
Next café : Saturday 9th April 9am till noon.



Aston Clinton Repair Cafe

October 9, 2022 · 🌐

Thank you to everyone who volunteered at and visited the repair café yesterday. It was a record breaker, with 94 items coming in for repair. 67 of those were repaired on the spot, with others requiring parts or going away for later repair. This equated to a saving of nearly 1.5 tonnes of CO2 emissions!

Our next café is on November 12th. Hope to see you there!



Results Summary:

Emission saving (kg CO2e): -1,404.0

Replacement product savings (kg CO2e): -2,030.8

Product displacement loss (kg CO2e): 231.5

Repair Café in practice

Martine Postma
Director Repair Café Foundation

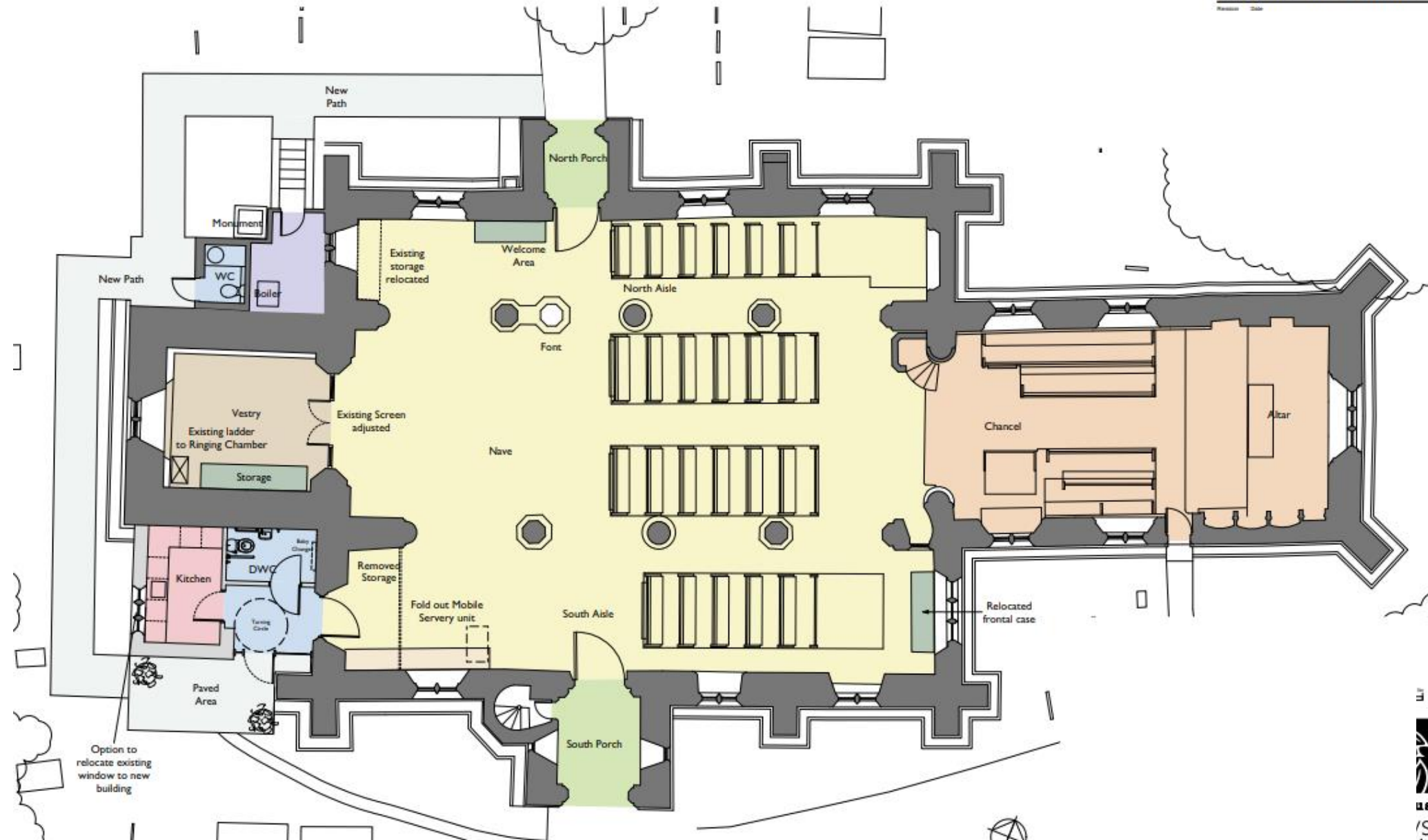
The Repair Café is a neighbourhood meeting place...

0:16 / 2:40

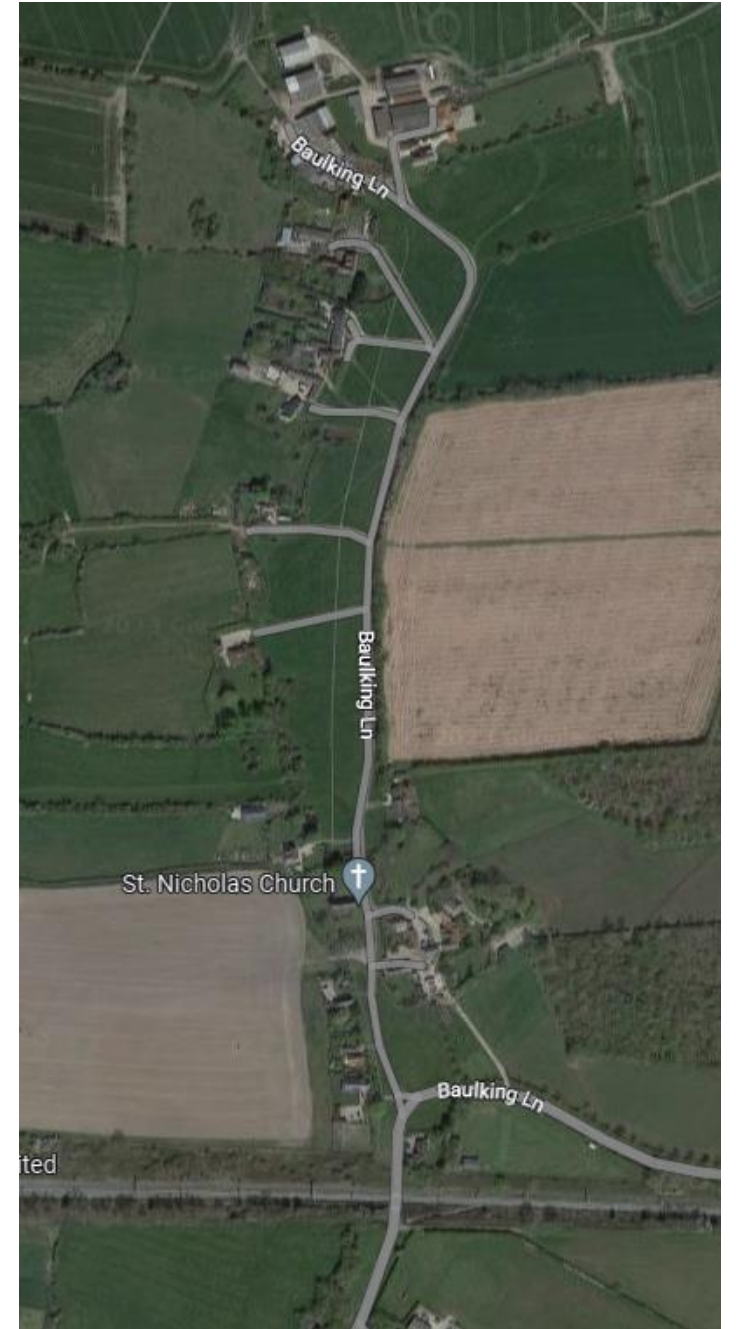
YouTube

Repair Café: Aston Clinton- St Michael & All Angels

DO NOT SCALE THIS DRAWING USE DIMENSIONS ONLY
VERIFY ALL DIMENSIONS ON SITE BEFORE COMMENCING ANY WORK
OR SHOP DRAWINGS
INFORM THE ARCHITECT BEFORE ANY WORK STARTS IF THIS
DRAWING EXCEEDS THE QUANTITIES IN ANY WAY
ISSUE STATUS: FOR INFORMATION
Revision 03/04



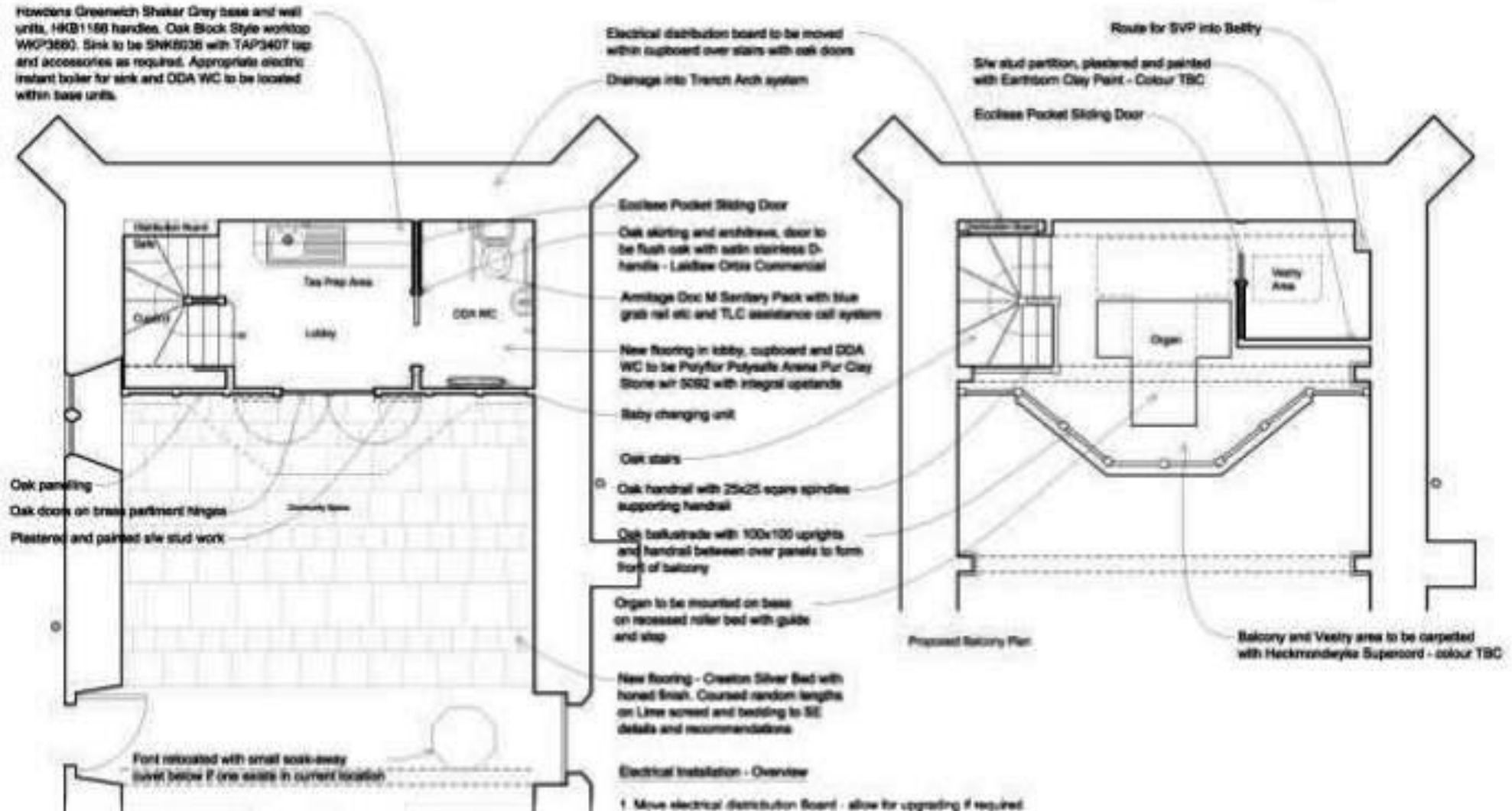
Baulking St Nicholas (Dorchester)- west end facilities



Baulking St Nicholas (Dorchester) west end facilities



Baulking St Nicholas (Dorchester) west end facilities





Baulking St Nicholas (Dorchester) west end facilities



Baulking St Nicholas (Dorchester) west end facilities



Baulking St Nicholas- west end facilities



- Proper planning- statements of need/significance- guidance is available
- Source an architect familiar with churches and conservation to produce an options appraisal and plans
- Early engagement with the Church Buildings Team- we're here to help!



Statement of Need

Version 4.4 – March 2018



Appendix 1: Overview of current and proposed activities

| Activity/Group | Attendance | Frequency | Storage (1) | Requirements | | | | |
|---|-------------|-----------------------------|------------------------------|--------------|-----|---------|----------------------|---------------------|
| | | | | AV | WC | Kitchen | Meeting Space /reche | Quiet /prayer space |
| Existing activities which need more facilities | | | | | | | | |
| Small service | 5 - 25 | 2 /week | Negligible | Yes | Yes | Yes | No | No |
| Large traditional service | 100 - 120 | 2 / week | Music (2) | Yes | Yes | Yes | Yes | Yes (3) |
| Large family service / Messy Church | 30 – 40 | 5 /month - plan to increase | Craft and music (2) | Yes | Yes | Yes | Yes | No |
| Morning and evening prayer | 1- 5 | 5 /week | None | No | Yes | No | No | Yes |
| Festival services | 300 - 500 | 5 per year | Small | Yes | Yes | Yes | Yes (4) | No |
| School service | 350 - 500 | 8 – 10 /year | Negligible | Yes | Yes | No | Yes (4) | No |
| Private Prayer | 1 at a time | Every day | Nil | No | Yes | No | No | Yes |
| | 1000 | 1 per week | Negligible | Yes | Yes | Yes (5) | Yes | Yes |
| Difficult to hold in the existing church | | | | | | | | |
| | 100 | 2/ month (6) | Lots! | Yes | Yes | Yes | Yes | No |
| | 250 | (7) | Yes | Yes | Yes | Yes | Yes (4) | Yes (8) |
| | 500 | 1/ month | Yes | Yes | Yes | Yes | Yes | No |
| | 500 | (10) | Yes | Yes | Yes | Yes | Yes (4) | Yes (8) |
| | 1000 | 2-3 a week | Yes | Yes | Yes | Yes | (9) | No |
| Not possible in the current building | | | | | | | | |
| | 50 | 2 or 3 a year initially | Yes | Yes | Yes | Yes | Yes (4) | Yes (8) |
| | 20 | 1 per week to increase | Kitchen and space for tables | Yes | Yes | Yes | Yes (4) | Yes (8) |

dac@oxford.anglican.org

01865 208270

<https://www.oxford.anglican.org/parish-support/church-buildings/>

